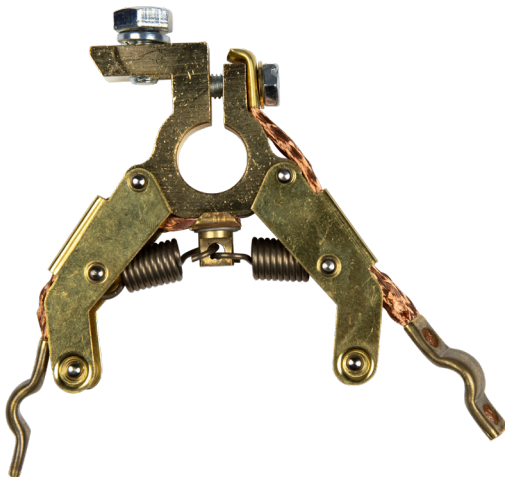
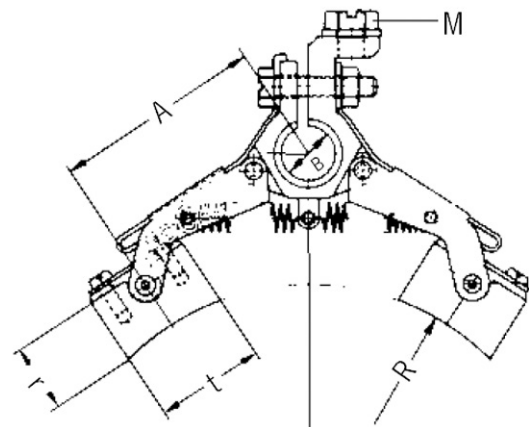


## DOUBLE LEG BRUSH HOLDER TYPE DDG FOR SLIP RINGS (WITH SELF-ALIGNING BRUSHES)

Angled holders with self-aligning brushes in a "boogie rocker" for perfect contact and extended brush life. Well suited for installations in confined and restricted spaces. Designed for loads of at least 25 A/cm and compliant with all copper grades. The same robust and reliable design as types DE and DD. Suitable for slip rings with very large diameters.

*Product information for which Carbex bears no responsibility is provided by the manufacturer.*



PRODUCT AND DATA  
SHEETS FOR DOWNLOAD

ITEM NUMBER	PRODUCTION TYPE	BRUSH DIMENSION			ARM LENGHT A	BORE DIAMETER		WIDTH C	CONNECTION SCREW M	MAX A
		t	a	r		STANDARD B	MAX			
13 030 1610	1664 DDG40 B10	16	6,4	13	40	10	8-10	11,5	M4	25A
13 030 2210	2264 DDG40 B10	22	6,4	13	40	10	8-10	11,5	M4	25A
13 030 2510	258 DDG60 B13	25	8	20	60	13	12-16	13,5	M5	60A
13 030 3210	3210 DDG60 B16	32	10	20	60	16	15-17	15,5	M8	150A
13 030 4510	4514 DDG80 B16	45	14	25	80	16	16-20	23	M10	220A
13 030 4520	4516 DDG80 B17	45	16	25	80	17	16-20	27	M12	265A
13 030 5010	5020 DDG95 B18	50	20	25	95	18	16-20	30	M12	350A
13 030 6010	6025 DDG105 B17	62	25	25	105	17	18-20	36	M12	500A

BEYOND THE BOUNDARIES OF BRUSH TECHNOLOGY